



Silverstone TS431U Firmware updates guideline

MICROSOFT WINDOWS VERSION

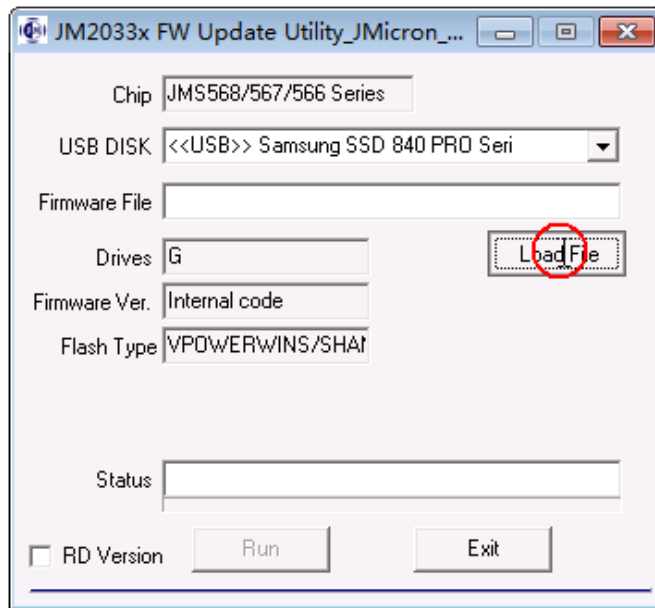
Before you start to update the TS431U firmware, please read the below statement

1. Please connect your USB 3.0 cable and adapter of TS431U to your computer when you update the TS431U firmware.
2. This Firmware is working on Microsoft Windows only.
3. Please INSERT at least 1 HDD in TS431U to work on the update new firmware application.

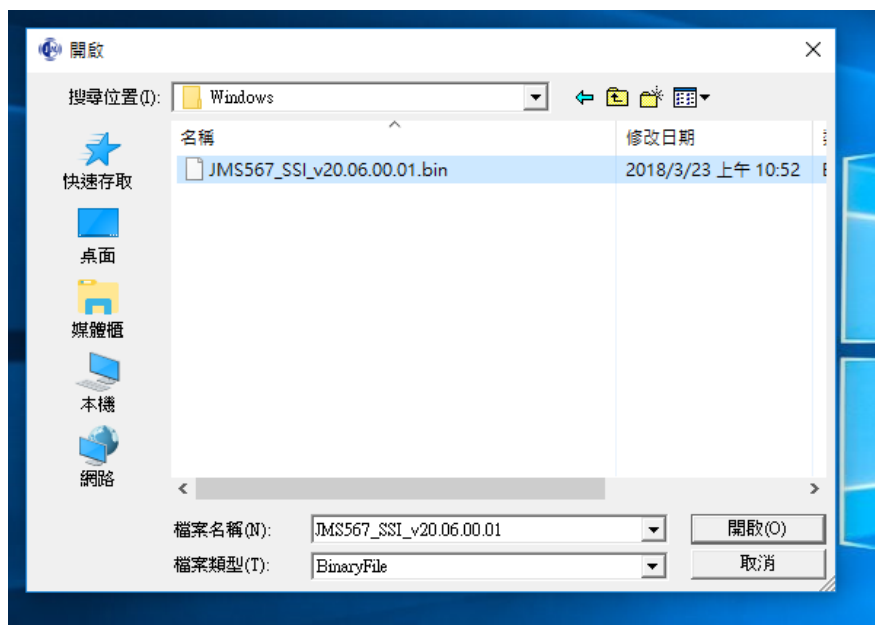
This action will not impact your HDD/SSD.

4. Please CHECK that the above steps has finished.
5. Please follow our steps to update your TS431U Firmware in windows system

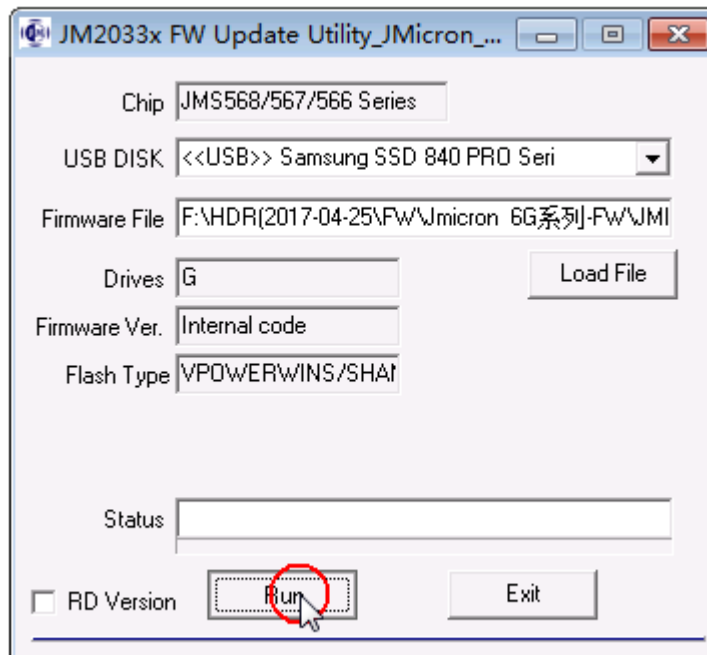
Step 1. Connect TS431U with the computer, then open update tool you can see the tool will show Information, please click load file button.



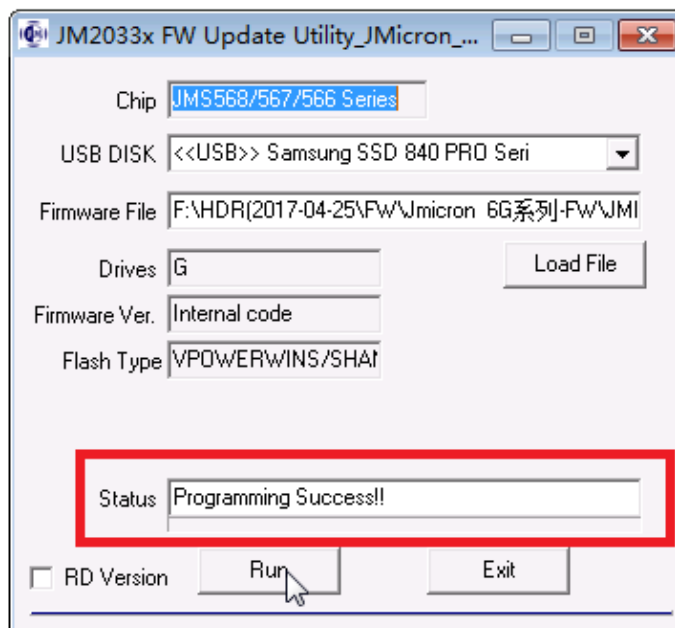
Step 2. select firmware “JMS567_SSI_v20.06.00.01.bin” to proceed.



Step 3. Click Run button to update firmware.



Step 4. After the update process success, TS431U will automatically reset.



Step 5. Click Exit to close the program.

